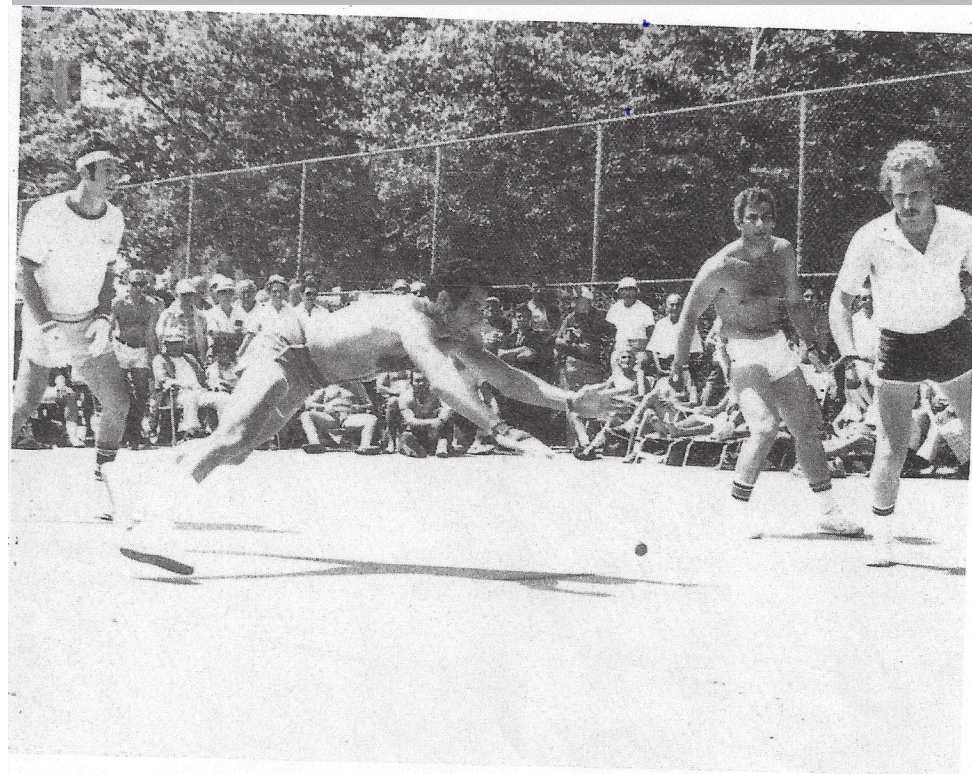


# Marc Goldberg

Aggressive and tenacious in the extreme, 1-waller Marc Goldberg was forever close to the wall shooting for kills, diving, even crawling on hands and knees for returns.

More often than not, at the conclusion of one of his games, he'd be dripping blood from both knees and both elbows. His style brought him to two State 1-Wall Doubles Championships in 1976 and '78. In USHA National Doubles he reached the semi-finals three times, 1975, '82, and '83. In 1981 he and his long-standing partner (eventually reaching 18 years) Dan Flickstein, lost by 5 points in the third game of the National USHA Doubles Final.

## PLAYERS OF DISTINCTION



1981 USHA Open Doubles finals: Flickstein and Goldberg vs. Levine and Reyer, with Marc making a typical diving retrieve. *Goldberg diving*